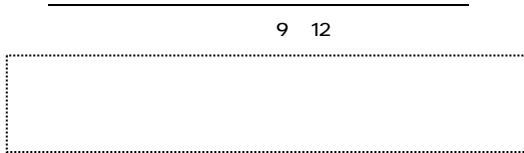
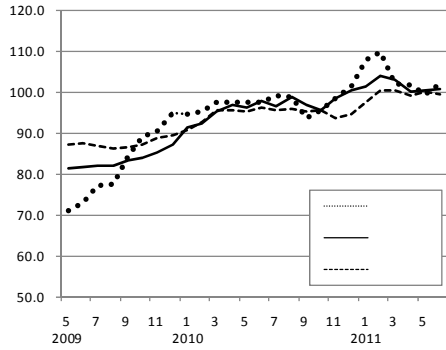


23 10
CI



9 12

...

...

(11/5 11/7 +4 1)

...

...

(11/6 0.85 11/7 0.88)

5)

+0.5)

...

(

(H 23.9.1)

(H 23.9.1)	1,166,605	18	462,863	80
	208,245	195	57,138	-
	958,360	213	108,140	58
	444,432	253	29,270	43
	262	001	15,968	26
	18		70,983	59
	-		22,818	25
1	018	97	34,507	6
2	016	10	110,161	15
3	006	16	48,706	17
1	020	19	6,220	10
2	016	26	52,827	97
3	015	27	36,941	15
			27,012	16
			21,882	24
			14,061	19
			18,368	27
			9,562	19
			19,178	12

		10 3			
23/9	23/12	23/3	23/6	23/9	23/12
		16	15	15	12
		59	57	63	66
		25	28	22	22
	DI ()	9	13	7	10
	DI ()	9	18	9	11

		H3 2 4 6	
		598 9	6 005
		22 6	298
		3 7	4 7

		H3 5 1	
		232	65 598
		102	33 822
		56	32 249
		19	32 732
		56	8 204

		H1 (7 1)	
		21	68 035
		21	609 917

		...H2 (2 1)	
		H0 21	
		22	17 136
()		22	22 374
		20	583
		20	84 736

		...H0	
		H9 20	
		20	2 189
		19	224
		19	15 754

		H2	
		22	3 187
		22	93 560
		22	23 558
		22	2 854 828

		... H9 ()	
		19	16 564
		19	107 999
		19	41 576
		19	5 452 506

		20	
		3 7	4 2
		2 8	3 7

		20	
		46 114	4 941 987
		51 728	5 414 944

20	32 913
	21 520
	838
	10 556
1	2 818
(.....	2 754)
	22

		22	
		586 4	520 7
		73 2	74 0

		22	
		1 759	1 657
		706	489

		233	94
		342	232
		67.5	18 4
		69 2	5 7
		4 0	2 6

		21	4 186k	377 947k
		21	1 383k	121 416k
		20	1 859 nm	1 537 nm

10	18 0
10	1.5	1
10	1.0	13
	2010

																				CI		
		()		()		()		()		()		()		22		()						
		%	%	%	%	%	%	%	%	%	%	%	%	%	%	%	%	%				
20	103.8	3.4	103.6	3.8	82.5	8.9	2,815	5.9	209,511	2.5	51,145	4.5	10,935	31	102.1	1.4	73.4	0.3	-	-	-	
21	81.1	21.9	76.4	29.7	67.1	18.7	2,608	7.4	197,758	7.0	46,093	9.9	7,884	27.9	100.7	1.4	74.6	1.2	-	-	-	
22	94.4	16.4	96.4	26.2	67.9	1.2	2,638	1.1	195,791	2.6	49,561	7.5	8,131	31	100.0	0.7	74.0	0.6	-	-	-	
23/5	89.2	5.5	86.4	10.0	68.0	1.7	217	3.4	15,774	2.5	2,374	33.4	637	6.4	99.9	0.4	97.1	2.5	99.3	105.1	89.4	
23/6	92.6	1.7	93.5	3.3	68.3	0.6	235	2.8	16,033	0.5	3,518	21.6	727	5.8	99.7	0.4	50.9	1.2	102.6	107.4	89.2	
23/7	93.0	3.0	96.0	2.9	68.5	0.9	242	4.7	17,843	0.8	3,731	23.3	834	21.2	99.7	0.2	65.8	2.5	104.6	107.1	88.6	
23/8	p 93.7	0.6	p 97.5	1.7	p 69.7	2.4	233	5.8	p 15,573	2.6	3,298	22.4	820	14.0	99.9	0.2	81.0	0.0	
20	105.9	7.1	114.2	5.5	90.4	6.7	2,108	6.3	177,048	4.0	55,097	5.5	8,331	5.9	102.4	2.1	68.3	0.5	-	-	-	
21	78.2	28.0	71.2	37.7	63.5	29.8	1,933	8.2	171,083	7.7	49,164	10.8	6,237	25.1	101.4	1.0	75.9	7.6	-	-	-	
22	104.0	38.5	121.1	70.1	69.5	9.4	1,952	1.0	166,997	2.0	52,936	7.7	6,484	4.0	100.0	1.4	73.2	2.7	-	-	-	
23/5	105.9	1.4	130.2	3.8	73.6	9.1	161	0.5	12,929	2.0	2,601	28.7	574	3.9	99.4	1.0	100.6	6.0	99.6	100.5	99.5	
23/6	103.3	0.6	125.9	1.6	75.3	6.9	179	0.5	13,126	1.9	4,048	17.4	585	2.8	99.5	0.4	56.5	1.2	p 102.0	100.6	99.1	
23/7	101.4	1.3	121.7	3.3	74.4	5.8	189	3.5	14,410	1.9	4,140	20.9	759	9.4	99.2	0.2	59.5	1.4	
23/8	182	3.4	p 13,016	4.6	3,621	17.2	527	3.3	99.4	0.1	73.8	0.0	

p

r

FFB

...

(

		17						17						17								
		()		()		()		()		()		()		()		()		()				
		%	%	%	%	%	%	%	%	%	%	%	%	%	%	%	%	%				
20	0.77	0.25	6,385	27	103.7	1.5	97.2	7.3	98.9	0.3	58,963	2.7	43,754	4.3	15,646	11.0	112,050	4.4				
21	0.45	0.32	6,004	381	103.9	0.2	65.9	32.2	95.1	3.8	58,264	2.3	42,761	2.3	15,480	1.1	116,295	3.8				
22	0.56	0.11	5,980	24	104.2	0.3	87.2	32.3	95.7	0.6	59,934	2.9	42,515	0.6	13,321	13.9	123,287	6.0				
23/5	0.61	0.10	6,019	9	104.9	0.6	75.5	6.9	81.8	1.0	59,845	2.6	42,001	0.2	1,071	4.8				
23/6	0.63	0.09	6,002	3	105.1	0.8	84.9	0.7	r 131.5	0.7	41,940	0.6	1,165	1.4	125,240	1.6				
23/7	0.64	0.10	5,973	20	105.4	0.7	89.9	0.7	110.8	0.2	41,992	0.2	1,081	1.4				
23/8	0.66	0.12	p 5,967	29	1,028	3.5				
20	0.92	0.42	614	1	107.8	2.0	84.1	7.8	92.8	3.1	34,769	1.8	23,966	0.3	155	31.4	952,229	0.0				
21	0.48	0.44	597	17	105.5	2.1	50.2	40.3	87.8	5.4	35,458	2.0	23,526	1.8	181	16.8	967,374	1.6				
22	0.63	0.15	605	8	105.2	0.3	81.7	62.7	89.1	1.5	36,144	1.9	23,978	1.9	154	14.9	1,008,665	4.3				
23/5	0.79	0.21	105.6	0.7	76.9	3.1	75.5	0.9	36,188	2.0	23,293	0.9	13	18.1				
23/6	0.76	0.18	105.5	0.2	85.5	4.1	116.0	4.5	23,311	1.1	21	133.3	1,017,227	0.8				
23/7	0.79	0.18	594	7	105.8	0.5	86.7	0.0	113.1	1.3	23,429	0.6	11	57.1				
23/8	0.82	0.23	10	33.3				

FFB

3748
076-225-1341
076-225-1345
toukei@pref.ishikawa.lg.jp

